



JP (Automatic
Transmissions) Ltd

Pump Wear Protection

Mercedes 722.6 / 722.9

JPAT Part No: N258 38 03

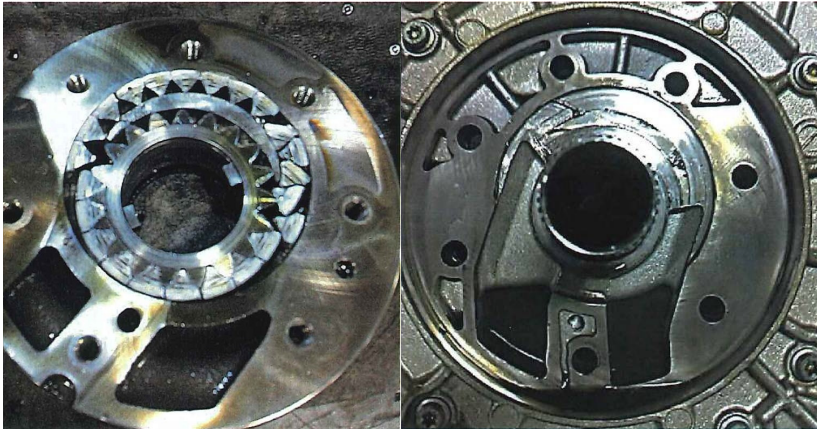
JPAT Part No. **N258 38 03**. Description:

- Affordable insurance in case of pump failure
- Pump failure = the cost of a new bell housing
- Guaranteed flat, hard steel surface protection
- Fits in bell housing pump pocket
- Precisely cut with laser accuracy
- Intended for use on **good housings ONLY**

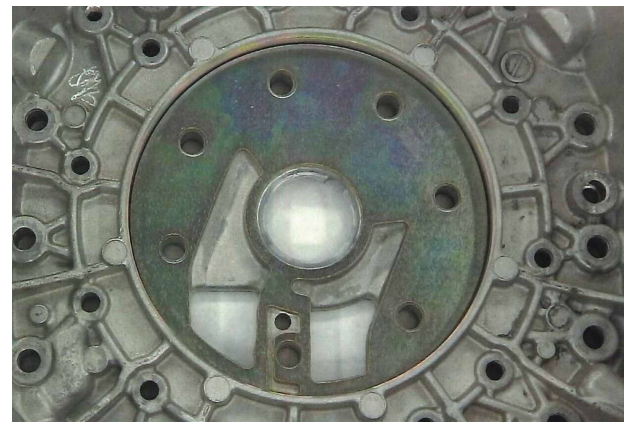


The Problem

Broken pump gears and bell housing damaged by broken pump gears



Low-Cost Prevention



PARTS HOTLINE: +44 (0)1934 853956



Units 4a & 4b Pear Tree Industrial Estate, Bath Road,
Upper Langford, N. Somerset, BS40 5DJ
info@jpat.co.uk www.jpat.co.uk

