

Transfer Case DCD

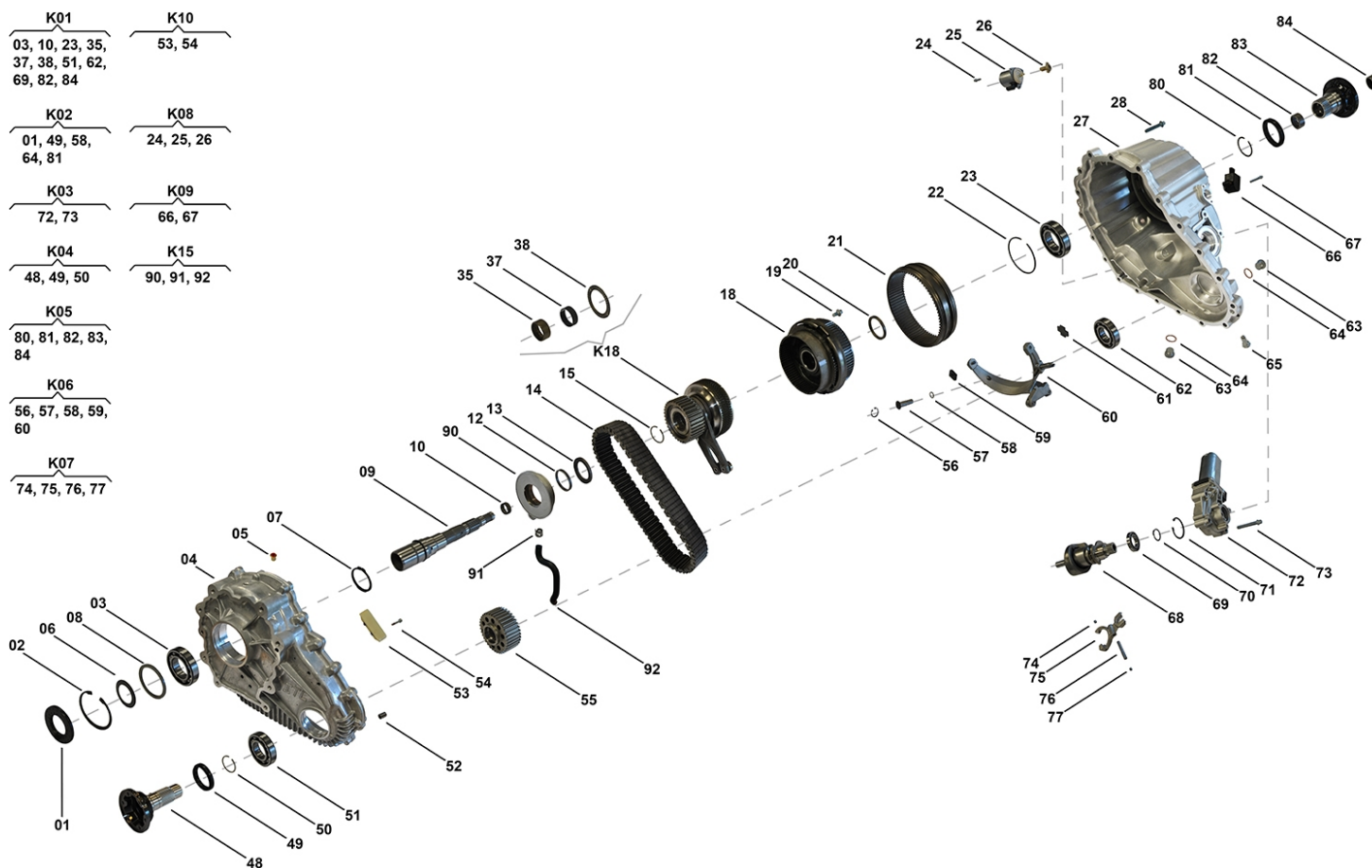
N921 00 02, N921 00 01

OEM No: A1642801200; A1662800800

Brands

Brand	Modelseries
Mercedes-Benz	GL-Class; M-Class

List of parts



Pos	Part number	OEM no	Quantity	Product name	Info
'I01	N921 00 02	A1642801200		OE References	A1642800900, A1642801200
'I02	N921 00 01	A1662800800		OE References	A1642800800, A1642801000, A1642801100, A1642801300, A1642801400, A1662800300, A1662800800
'K01	N901 10 01		1 piece	Bearing Kit	Contains position 03, 10, 23, 35, 37, 38, 51, 62, 69, 82, 84
'K02	SP00991		1 piece	Sealing Kit	Contains position 01, 49, 58, 64, 81
'K03	SP01203	A1645400188	1 piece	Actuator Kit	Contains position 72, 73
'K04	SP00989	A1642820082	1 piece	Flange Kit Front	Contains position 48, 49, 50

All rights reserved.

This publication may not be reproduced in any form, in whole or in part, without a written approval from JP (Automatic Transmissions) Ltd. Subject to change without notice!

Transfer Case DCD

N921 00 02, N921 00 01

OEM No: A1642801200; A1662800800

List of parts

Pos	Part number	OEM no	Quantity	Product name	Info
'K05	SP00085	A1642870045	1 piece	Flange Kit Rear	Contains position 80, 81, 82, 83, 84 Information for DCD: Used in A1642801200 Information for DCS: Used in A2512801300
'K05	SP00988	A1642820182	1 piece	Flange Kit Rear	Contains position 80, 81, 82, 83, 84 Information for DCD: Used in A1662800800 Information for DCS: Used in A2512801700, A2512802700, A2512802800, A25152803100
'K06	SP00288		1 piece	Shift Fork Kit	Contains position 56, 57, 58, 59, 60
'K07	SP00273		1 piece	Shift Fork Kit	Contains position 74, 75, 76, 77
'K08	SP00075	A1642800058; IGF500011	1 piece	Solenoid Kit	Contains position 24, 25, 26
'K09	N901 35 03	A1645500055; IAB500191	1 piece	Sensor Kit	Contains position 66, 67
'K10	N902 29 12		1 piece	Sliding Block Kit	Contains position 53, 54
'K15	SP01014		1 piece	Oil Pump ASM	Contains position 90, 91, 92
'K18	SP00990		1 piece	Sprocket ASM	
01	SP00986	A0149971346	1 piece	Ring Sealing	
02	SP00317		1 piece	Locking Ring	Information for DCS: Used in A2512801300, A2512801400, A2512802700, A2512802800, A2512803100, A2512803200
03	N901 46 01		1 piece	Groove Ball Bearing	
04	Not available		1 piece	Housing Front	
05	SP00985	A0019980950	1 piece	Air Flue Acceptance	Information for DCS: Used in A2512800700, A2512800800, A2512800900, A2512801100, A2512801200, A2512801300, A2512801400, A2512801500, A2512801700, A2512802000
06	SP00984		1 piece	Disc Spring	
07	N901 26 01		1 piece	Locking Ring	
08	Not available		1 piece	Shim	
09	N921 29 01		1 piece	Drive Shaft	
10	N902 23 02		1 piece	Needle Bearing	
12	N901 22 03		1 piece	Distance Washer Oil Pump	Information for ITC PLA: Used in IAB500240, IAB500241, IAB500243, IAB500244, IAB500280, LR006016, LR008206
13	N901 22 02		1 piece	Sealing Washer	
14	N901 29 01	HV098	1 piece	Chain	Information for DCD: Used in A1662800800 Information for ITC PLA: Used in IAB500240, IAB500241, IAB500243, IAB500244, IAB500280, LR006016, LR008206
14	N921 29 04		1 piece	Chain	Information for DCD: Used in A1642801200
15	N901 32 04		1 piece	Snap Ring	
18	SP00973		1 piece	Differential ASM	
19	Not available		6 pieces	Socket Screw	
20	SP00251		1 piece	Spacer Ring	
21	SP00252		1 piece	Sliding Collar	

All rights reserved.
This publication may not be reproduced in any form, in whole or in part, without a written approval from JP (Automatic Transmissions) Ltd. Subject to change without notice!

Transfer Case DCD

N921 00 02, N921 00 01

OEM No: A1642801200; A1662800800

List of parts

Pos	Part number	OEM no	Quantity	Product name	Info
22	SP00256		1 piece	Circlip	Information for ITC PLA: Used in IAB500240, IAB500241, IAB500243, IAB500244, IAB500280, LR006016, LR008206
23	N901 46 02		1 piece	Groove Ball Bearing	
24	Only available in K08		3 pieces	Screw	
25	Only available in K08		1 piece	Solenoid	
26	Only available in K08		1 piece	Control Element	
27	Not available		1 piece	Housing Rear	
28	SP00314		19 pieces	Tapping Screw	
35	SP00306		1 piece	Needle Sleeve	
37	N902 23 03		1 piece	Needle Ring Axial	
38	SP00134		2 pieces	Needle Ring Axial	
48	Only available in K04		1 piece	Flange Front	
49	N901 15 03	A0159975845	1 piece	Ring Sealing	
50	N901 32 01	A0019941440	1 piece	Snap Ring	
51	N901 46 04		1 piece	Groove Ball Bearing	
52	SP00155		2 pieces	Pin	
53	Only available in K10		2 pieces	Sliding Block	
54	Only available in K10		4 pieces	Screw	
55	SP00304		1 piece	Sprocket	Information for ITC PLA: Used in IAB500240, IAB500241, IAB500243, IAB500244, IAB500280, LR006016, LR008206
56	Only available in K06		1 piece	Locking Ring	
57	Only available in K06		1 piece	Bolt Specific	
58	Only available in K02 & K06		1 piece	O-Ring	
59	SP00289		2 pieces	Sliding Block	
60	Only available in K06		1 piece	Shift Fork	
61	SP00287		1 piece	Magnet	Information for ITC PLA: Used in IAB500244, IAB500280, LR008206, LR023011, LR035617, LR045477, LR049160, LR052611, LR089531
62	N901 46 05		1 piece	Groove Ball Bearing	
63	N901 37 01	A0029900612; IYB500020	2 pieces	Plug	Information for ITC PLA: Used in IAB500240, IAB500241, IAB500243, IAB500244, IAB500280, LR006016, LR008206
64	N901 22 01	8201057777; IYF500030; TYF101070	2 pieces	Washer Sealing	Information for ITC PLA: Used in IAB500240, IAB500241, IAB500243, IAB500244, IAB500280, LR006016, LR008206
65	SP00286		1 piece	Adjustment	
66	Only available in K09		1 piece	Sensor	
67	Only available in K09		2 pieces	Tapping Screw	
68	SP01015		1 piece	Shaft ASM Actuator	
69	SP00267		1 piece	Groove Ball Bearing	
70	SP00269		1 piece	Locking Ring	
71	SP00268		1 piece	Retaining Ring	
72	Only available in K03		1 piece	Actuator	
73	Only available in K03		4 pieces	Tapping Screw	
74	Only available in K07		2 pieces	Caster	
75	Only available in K05		1 piece	Shift Fork	
76	Only available in K07		1 piece	Pin Magnet Shift Fork	
77	Only available in K07		1 piece	Closing Cover	
80	N901 32 03	A0019941540	1 piece	Circlip	

All rights reserved.

This publication may not be reproduced in any form, in whole or in part, without a written approval from JP (Automatic Transmissions) Ltd. Subject to change without notice!

4WD Single Parts

2018



Transfer Case DCD

N921 00 02, N921 00 01

OEM No: A1642801200; A1662800800

List of parts

Pos	Part number	OEM no	Quantity	Product name	Info
81	N901 15 02	A0159975945	1 piece	Ring Sealing	
82	Only available in K01 & K05		1 piece	Needle Sleeve	
83	Only available in K05		1 piece	Flange Rear	
84	SP00265		1 piece	Needle Sleeve	
90	Only available in K15		1 piece	Pump ASM	
91	Only available in K15		1 piece	Clamp	
92	Only available in K15		1 piece	Suction Pipe	
	SP02000		1 piece	Sealant	Sealant SILICON BLACK (1pce = 300ml)

All rights reserved.

This publication may not be reproduced in any form, in whole or in part, without a written approval from JP (Automatic Transmissions) Ltd. Subject to change without notice!