

Transfer Case ATC450

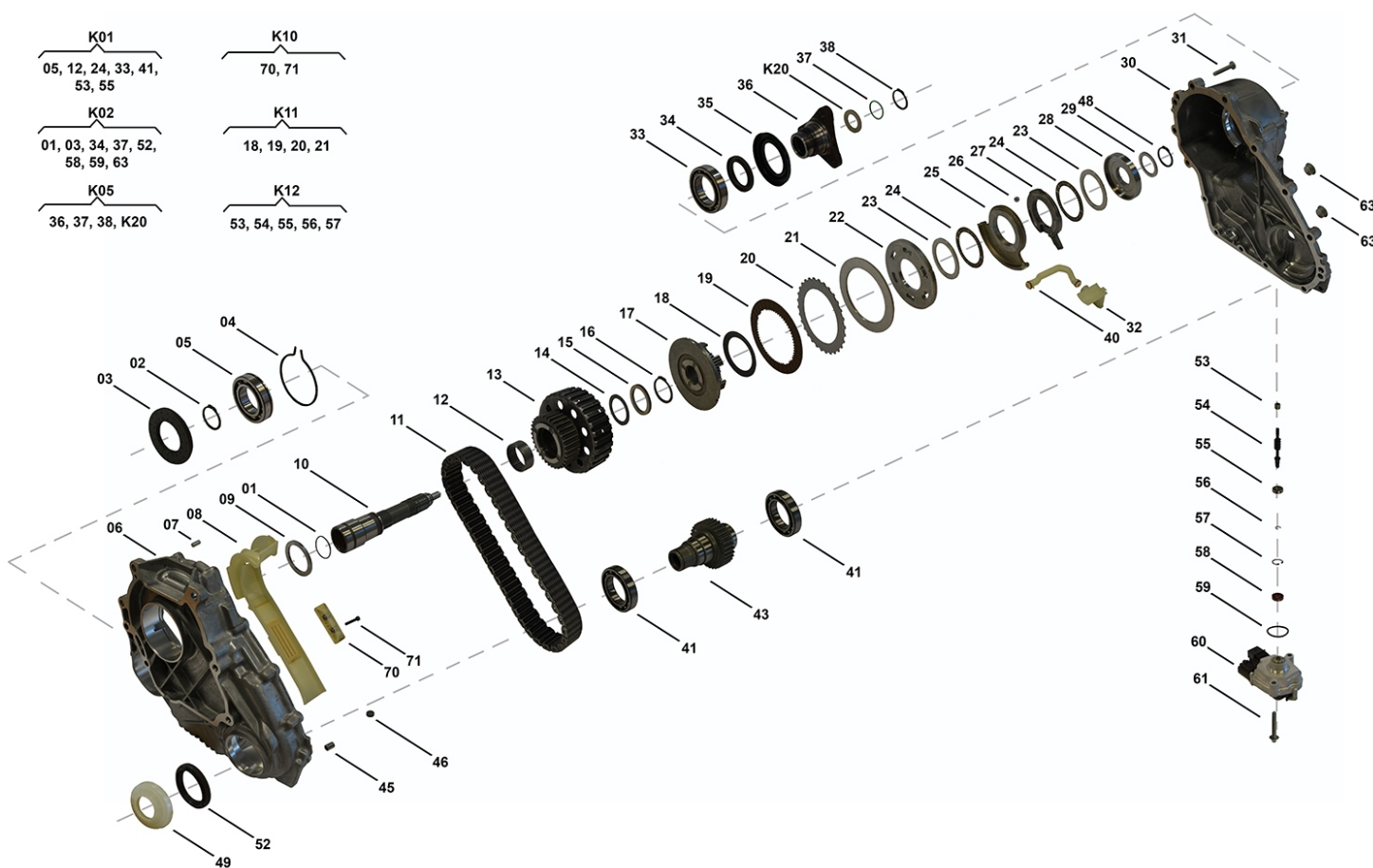
N927 00 02, N927 00 01, N927 00 03

OEM No: 27107643751; 27107643752; 27107643753

Brands

Brand	Modelseries
BMW	X3; X5; X6

List of parts



Pos	Part number	OEM no	Quantity	Product name	Info
'101	N927 00 02	27107643751		OE References	27107605344, 27107609196, 27107610586, 27107619178, 27107627944, 27107629405, 27107629605, 27107635753, 27107636480, 27107639271, 27107643751
'102	N927 00 01	27107643753		OE References	27107609193, 27107610588, 27107619180, 27107619776, 27107636482, 27107639264, 27107643753

All rights reserved.
This publication may not be reproduced in any form, in whole or in part, without a written approval from JP (Automatic Transmissions) Ltd. Subject to change without notice!

Transfer Case ATC450

N927 00 02, N927 00 01, N927 00 03

OEM No: 27107643751; 27107643752; 27107643753

List of parts

Pos	Part number	OEM no	Quantity	Product name	Info
'I03	N927 00 03	27107643752		OE References	27107605345, 27107609197, 27107610587, 27107619179, 27107627945, 27107629406, 27107629606, 27107635754, 27107636481, 27107639272, 27107643752
'K01	N927 10 01		1 piece	Bearing Kit	Contains position 05, 12, 24, 33, 41, 53, 55
'K02	N927 05 01		1 piece	Sealing Kit	Contains position 01, 03, 34, 37, 52, 58, 59, 63
'K05	SP01501	27107595650; 27107645468	1 piece	Flange Kit Rear	Contains position 36, 37, 38, K20 Information for ATC35L: Used in 27108643150, 27108662968 Information for ATC45L: Used in 27107643758, 27107643759, 27108643151, 27108643152
'K10	N919 29 02		1 piece	Sliding Block Kit	Contains position 70, 71 Information for DCS: Used in A2512801300, A2512801400, A2512802700, A2512803100, A2512803200 Information for PL72 T Porsche: Used in 95834102011, 95834102012 Information for PL72 T VW: Used in 0BU341010M, 0BU341011C, 0BU341011K, 0BU341011M
'K11	N929 07 01		1 piece	Clutch Kit	Contains position 18, 19, 20, 21
'K12	N927 35 01		1 piece	Shaft Actuator Kit	Contains position 53, 54, 55, 56, 57
'K20	SP00115	27107546670	1 piece	Shim Set	Contains 13 different Shims with Dimensions from 2.90mm up to 4.10mm
01	SP00445	27107609202	1 piece	O-Ring	
02	N901 26 01		1 piece	Locking Ring	
03	N902 15 01	27107539262	1 piece	Radial Sealing	
04	SP00140		1 piece	Retaining Ring	
05	Only available in K01		1 piece	Ball Bearing	
06	Not available		1 piece	Housing Front	
07	SP00154		1 piece	Pin	
08	Not available		1 piece	Deflector ASM	
09	SP01933		1 piece	Shim	
10	SP01923		1 piece	Input Shaft	
11	N927 29 01		1 piece	Chain	
12	Only available in K01		1 piece	Needle Bearing	
13	SP01975		1 piece	Gear ASM with Drum Clutch	
14	SP01932		1 piece	Thrust Washer	
15	Not available		1 piece	Shim	
16	SP01034		1 piece	Adjusting Ring	
17	SP01096		1 piece	Hub	
18	Only available in K11		5 pieces	Spring Disc	
19	Only available in K11		7 pieces	Friction Plate	

All rights reserved.

This publication may not be reproduced in any form, in whole or in part, without a written approval from JP (Automatic Transmissions) Ltd. Subject to change without notice!

Transfer Case ATC450

N927 00 02, N927 00 01, N927 00 03

OEM No: 27107643751; 27107643752; 27107643753

List of parts

Pos	Part number	OEM no	Quantity	Product name	Info
20	Only available in K11		6 pieces	Steel Plate	
21	Only available in K11		1 piece	Plate	
22	SP01082		1 piece	Piston	
23	SP01083		2 pieces	Shim	
24	Only available in K01		2 pieces	Bearing Cage and Roller	
25	SP01946		1 piece	Actuator Ring Ball Ramp	
26	SP01085		3 pieces	Ball	
27	SP01945		1 piece	Actuator Ring Ball Ramp	
28	SP01084		1 piece	Ring	
29	Not available		1 piece	Shim	
30	Not available		1 piece	Housing Rear	
31	SP01042		14 pieces	Screw	
32	Not available		1 piece	Deflector ASM	
33	Only available in K01		1 piece	Ball Bearing	
34	N922 15 01	27107546667	1 piece	Radial Sealing	
35	SP01499	27107597688	1 piece	Slinger	Information for ATC35L: Used in 27108643150, 27108662968
36	Only available in K05		1 piece	Flange Rear	
37	SP01037	27107599326	1 piece	Seal O-Ring	
38	SP00112	27107539525; 331381LA0A	1 piece	Retaining Ring	
40	Not available		1 piece	Tube ASM	
41	N905 46 03		2 pieces	Ball Bearing	
43	SP00646		1 piece	Sprocket Output	
45	SP00155		2 pieces	Pin	
46	SP00130	05143630AA; A2102760098	1 piece	Magnet	
48	SP01213		1 piece	Retaining Ring	
49	N905 15 04	27107539212	1 piece	Slinger	
52	N902 15 02	27107539266	1 piece	Radial Sealing	
53	Only available in K01 & K12		1 piece	Needle Bearing	
54	Only available in K12		1 piece	Shaft Actuator	
55	Only available in K01 & K12		1 piece	Ball Bearing	
56	Only available in K12		1 piece	Retaining Ring	
57	Only available in K12		1 piece	Retaining Ring	
58	SP01038	27107593452	1 piece	Radial Seal Ring	
59	SP01040	27107593451; 95834150100	1 piece	Seal O-Ring	
60	Not available	27608643153	1 piece	Actuator Motor FR	Information for ATC350: Used in 27107643750 Information for ATC35L: Used in 27108643149, 27108643150, 27108662300, 27108662968 Information for ATC450: Used in 27107643753 Information for ATC45L: Used in 27108643151, 27108643152, 27107854164

All rights reserved.

This publication may not be reproduced in any form, in whole or in part, without a written approval from JP (Automatic Transmissions) Ltd. Subject to change without notice!

4WD Single Parts

2018



Transfer Case ATC450

N927 00 02, N927 00 01, N927 00 03

OEM No: 27107643751; 27107643752; 27107643753

List of parts

Pos	Part number	OEM no	Quantity	Product name	Info
60	SP02030	27607643762	1 piece	Actuator Motor CAN	Information for ATC350: Used in 27107643748, 27107643749 Information for ATC35L: Used in 27107643754, 27107643755 Information for ATC450: Used in 27107643751, 27107643752 Information for ATC45L: Used in 27107643758, 27107643759
61	SP01045	27107593450; 673002351; 90038507101; 95834150200	2 pieces	Screw	
63	SP00176	33117525064	2 pieces	Plug	
70	Only available in K10		1 piece	Sliding Block	
71	Only available in K10		2 pieces	Screw	
	N927 00 04	00004330136; 00004330563; 83220397244; 83222409710	1 piece	Transmission Fluid	Shipment in 1 liter bottles. Fillgrade information please see Oil List.
	SP02000		1 piece	Sealant	Sealant SILICON BLACK (1pce = 300ml)

All rights reserved.

This publication may not be reproduced in any form, in whole or in part, without a written approval from JP (Automatic Transmissions) Ltd. Subject to change without notice!