

Transfer Case ATC700

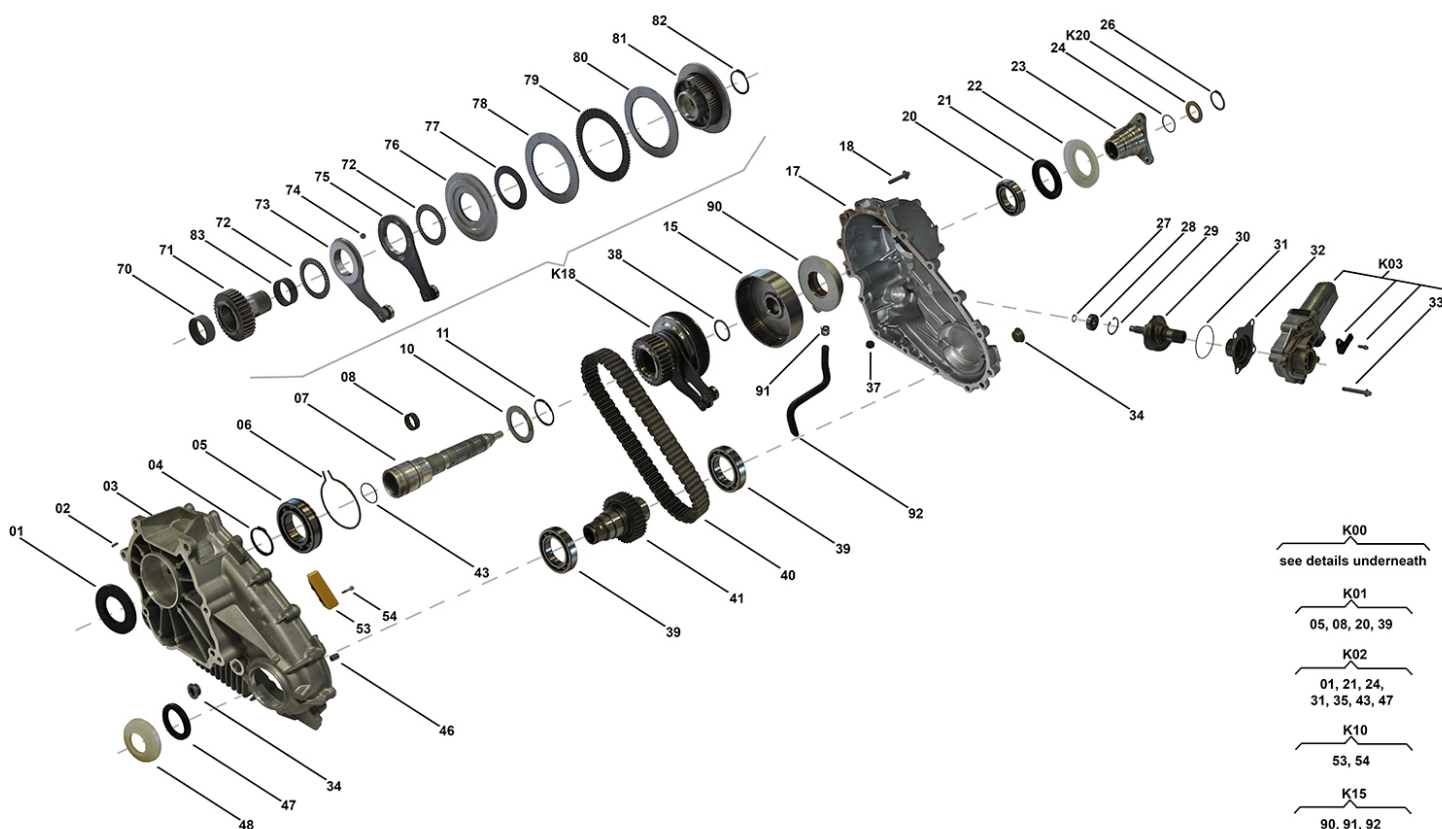
N907 00 01, N907 00 03, N907 00 02

OEM No: 27107599886; 27107599887; 27107599889; 27107599890; 27107599898; 27107599899

Brands

Brand	Modelseries
BMW	X5; X6

List of parts



Pos	Part number	OEM no	Quantity	Product name	Info
'I01	N907 00 01	27107599886; 27107599889		OE References	27107556249, 27107566252, 27107566253, 27107574777, 27107574825, 27107599886, 27107599889
'I02	N907 00 03	27107599898; 27107599899		OE References	27107590868, 27107599898, 27107599899
'I03	N907 00 02	27107599887; 27107599890		OE References	27107567644, 27107568233, 27107574778, 27107574826, 27107599887, 27107599890
'K00	SP02035		1 piece	Repair Kit	Contains position K03, 01, 05, 08, 20, 21, 24, 26, 27, 28, 31, 32, 34, 38, 39, 40, 43, 47, 53, 54, 70, 72, 77, 78, 79, 80, 82, 83, 90, 91 Detailed information can be found in Categories "Repair Kit's"

All rights reserved.
This publication may not be reproduced in any form, in whole or in part, without a written approval from JP (Automatic Transmissions) Ltd. Subject to change without notice!

Transfer Case ATC700

N907 00 01, N907 00 03, N907 00 02

OEM No: 27107599886; 27107599887; 27107599889; 27107599890; 27107599898; 27107599899

List of parts

Pos	Part number	OEM no	Quantity	Product name	Info
'K01	N905 10 01		1 piece	Bearing Kit	Contains position 05, 08, 20, 39
'K02	N902 05 01		1 piece	Sealing Kit	Contains position 01, 21, 24, 31, 35, 43, 47
'K03	N907 35 01	27102449709; 27107568267	1 piece	Actuator Kit	Supplied with Code Resistor
'K10	N902 29 12		1 piece	Sliding Block Kit	Contains position 53, 54
'K15	N905 38 01		1 piece	Oil Pump ASM	Contains position 90, 91, 92
'K18	N907 29 02		1 piece	Sprocket ASM	
'K20	SP00114	27107537629	1 piece	Shim Set	Contains 16 different Shims with Dimensions from 2.1mm up to 3.6mm
01	N902 15 01	27107539262	1 piece	Radial Sealing	
02	SP00154		1 piece	Pin	
03	Not available		1 piece	Housing Front	
04	SP00160		1 piece	Retaining Ring	
05	N902 46 01		1 piece	Ball Bearing	
06	SP00140		1 piece	Retaining Ring	
07	N902 29 08		1 piece	Main Shaft ASM	Information for ATC400: Used in 27103455133, 27103455134
08	N902 23 02		1 piece	Needle Bearing	
10	N902 22 02		1 piece	Thrust Washer	
11	N902 29 11		1 piece	Retaining Ring	
15	N902 29 03		1 piece	Drum	Information for ATC400: Used in 27103455133, 27103455134
17	Not available		1 piece	Housing Rear	
18	SP00180		15 pieces	Tapping Screw	
20	N902 46 02		1 piece	Ball Bearing	
21	N902 15 03	27107539265; 331401LA0A	1 piece	Radial Sealing	
22	SP00101	27107537663; 331411LA0A	1 piece	Slinger	
23	SP00104	27107539195	1 piece	Flange Rear	
24	N902 16 02	27107537631	1 piece	O-Ring	
26	SP00112	27107539525; 331381LA0A	1 piece	Retaining Ring	
27	SP00157		1 piece	Retaining Ring	
28	SP00150		1 piece	Ball Bearing	
29	SP00158		1 piece	Retaining Ring	
30	N902 29 13		1 piece	Shaft Actuator Assy	
31	N902 16 03		1 piece	O-Ring	
32	SP00159		1 piece	Needle Sleeve	
33	SP00132	27107539410	4 pieces	Screw	
34	SP00176	33117525064	2 pieces	Plug	
37	SP00130	05143630AA; A2102760098	1 piece	Magnet	
38	N902 22 01		1 piece	Thrust Washer	
39	N905 46 03		2 piece	Ball Bearing	
40	N907 29 01		1 piece	Chain	
41	N907 29 04		1 piece	Sprocket	
43	N902 16 01	27107537630	1 piece	O-Ring	
46	SP00155		2 pieces	Pin	
47	N902 15 02	27107539266	1 piece	Radial Sealing	
48	N905 15 04	27107539212	1 piece	Slinger	
53	Only available in K10		2 pieces	Sliding Block	
54	Only available in K10		4 pieces	Screw	

All rights reserved.
This publication may not be reproduced in any form, in whole or in part, without a written approval from JP (Automatic Transmissions) Ltd. Subject to change without notice!

4WD Single Parts

2018



Transfer Case ATC700

N907 00 01, N907 00 03, N907 00 02

OEM No: 27107599886; 27107599887; 27107599889; 27107599890; 27107599898; 27107599899

List of parts

Pos	Part number	OEM no	Quantity	Product name	Info
70	N902 23 04		1 piece	Needle Sleeve	
71	Only available in K18		1 piece	Sprocket	
72	SP00134		2 pieces	Needle Ring Axial	
73	SP00394		1 piece	Actuator Ring	
74	SP00302		5 pieces	Ball	
75	SP00395		1 piece	Actuator Ring	
76	SP00650		1 piece	Piston	
77	N901 24 01		4 pieces	Disk Spring	
78	Only available in K00 & K18		1 piece	Shim Set	Contains Shim Dimensions 3.40, 3.60, 3.80
79	Only available in K00 & K18		7 pieces	Torque Transfer Shim	
80	Only available in K00 & K18		8 pieces	Steel Plate	
81	Only available in K18		1 piece	Hub	
82	Only available in K00 & K18		1 piece	Retaining Ring	
83	N902 23 03		1 piece	Needle Ring Axial	
90	Only available in K00 & K15		1 piece	Oil Pump	
91	Only available in K00 & K15		1 piece	Clamp	
92	Only available in K15		1 piece	Suction Pipe	
	N927 00 04	00004330136; 00004330563; 83220397244; 83222409710	1 piece	Transmission Fluid	Shipment in 1 liter bottles. Fillgrade information please see Oil List.
	SP02000		1 piece	Sealant	Sealant SILICON BLACK (1pce = 300ml)

All rights reserved.

This publication may not be reproduced in any form, in whole or in part, without a written approval from JP (Automatic Transmissions) Ltd. Subject to change without notice!